

## TRIVIA

### Who we are!!



45<sup>th</sup> historical “tidbit.”

Dr. John Dahlem with help from Sharon Hodge and the CIF-SS Office Staff

Updated January, 2014

Total number of member schools – 581

School Year 2011-2012 - the CIFSS had 9,059 teams playing varsity sports

Number of Public Schools – 370 (64%)

Number of Private Schools – 206 (36%)

Average school size by enrollment – 1,423

Number of boarding schools – 18

Number of freelance schools (no league affiliation) – 26

Number of leagues – 86

Largest league by enrollment – Moore (average of 3,900)

Total population of students served – 802,526

Number of all boys schools – 15

Number of all girls schools – 23

Largest School by enrollment – 4,921 Paramount High School

Smallest School by enrollment – 18 Padre Pio



School farthest:

North – Lee Vining (geographically is north of San Francisco)

South – Avalon

West – Coast Union

East – Twentynine Palms

If Avalon played Lee Vining they would have to travel 390 miles

When Lee Vining plays Baker Valley in the Hi-Lo League, they must travel 395 miles with an estimated travel time of 6 hours and 45 minutes.



Unique locations:

- Avalon – on Catalina Island
- Death Valley Academy – in Shoshone
- Trona – no grass on fields



Trona’s sand field... “The Pit”

- Number of square miles served – 171,200
- Number of counties served – 10
- Number of cities served – 230

City with the most CIF-SS schools:

- Los Angeles (32)
- Riverside (15)



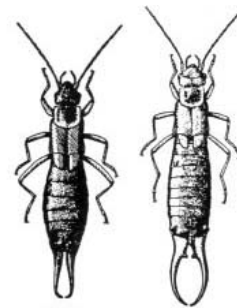
“The Spuds”

Most popular mascot:

- #1 Eagles (38)
- #2 Lions (17)

Unique Mascots:

- Amens - Holy Martyrs
- Breakers - Laguna Beach
- Contenders - Faith Baptist
- Gales - Holy Family
- Kares - Rio Hondo Prep
- Koalas - Connelly
- Nitros - Glendale
- Rajahs - Indio
- Seraphs - St. Bonaventure
- Spuds - Ojai Valley
- Tarbabe - Compton
- Toads - Thacher
- Tologs - Flintridge Sacred Heart



“Earwigs”

The most unique nickname:

- #1 Earwigs (Dunn School)
- #2 Spuds (Ojai Valley)





Match-ups that would be fun to see:

- The Lightning vs. the Flashes
- The Roadrunners vs. the Coyotes
- The Hornets vs. the Yellowjackets
- The Waves vs. the Breakers
- The Saints vs. the Sun Devils or the Red Devils vs. the Diablos
- The Aztecs vs. the Conquistadors
- The Fighting Irish vs. the Fightin Scots or the Highlanders
- The Toads vs. the Fighting Frogs

Most popular colors:

- #1 Blue & Gold (33)
- #2 Black & Gold (26)

Most unique color:

- Rainbow (Oak Grove)
- Salmon & Teal (Jack Weaver)
- Vegas Gold (Oaks Christian)
- Platinum (Chaparral)



Lee Vining High School

Schools with single Color:

- Ramona (Columbia Blue)
- Windward (Royal Blue)

School with four colors:

- Joel John Scholastic (Pink, Green, Black, White)

School with the same names:

- 16 schools start with St. (Saint)
- 14 schools start with San
- 12 schools start with Santa
- 11 schools start with word La
- 6 schools start with California
- 6 schools start with word El
- 6 schools start with Calvary
- 5 schools start with Bishop
- 5 schools start with Desert
- 4 schools start with Calvary Chapel
- 4 schools start with Rancho
- 4 schools start with Summit
- 3 schools starts with Canyon

3 schools start with Poly  
3 schools start with Arroyo  
3 schools start with Bethel  
3 schools start with Notre Dame  
3 schools start with Pacific  
3 schools start with Pacifica  
3 schools start with Redlands

Schools with same name:

Burroughs  
Cabrillo  
Canyon  
Centennial  
La Quinta  
Notre Dame  
Pacifica  
Poly (3)

Santiago  
St. Joseph  
Valencia  
Valley Christian  
Wilson

Number of school districts served – 145

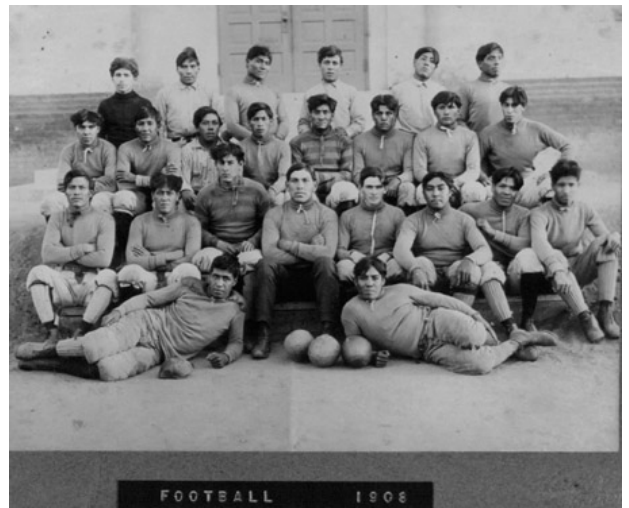
District with most member schools:

Anaheim Union High School District (9)

Archdiocese of Los Angeles - (36)

Unique types of schools:

American Indian schools  
Charter schools  
Court Schools  
Ethnic  
Prep Schools  
Religious  
Special education schools  
School for the Deaf  
Schools with incarcerated kids  
Schools for the arts  
Special academic academies



Early football team... Sherman Indian Institute..1908

## **THE STATISTICALLY AVERAGE SCHOOL IN CIF-SS:**

Name: Named after a city

Colors: Blue & Gold

In a league with 5 other schools

Public

Location: Los Angeles

Enrollment 1,350

Public

Coed

Mascot: Eagles

Demographics:

40% Caucasian

35% Latino

10% African American

10% Asian

5% Other

32 languages spoken